

# ROYAL SHENANDOAH GREENWAY: PHASE ONE

## PROPOSED SITES OF INTEREST ALONG THE GREENWAY

Front Royal is located in Warren County, 70 miles west of Washington, D.C., near the junction of I-66 and I-81. The North and South Forks of the Shenandoah River join here to form the main stem of the Shenandoah River. The Town is bounded by the Blue Ridge Mountains on the east and the Massanutten Mountains on the west. Elevations in the area range from 566 feet in downtown to over 3,300 feet in the surrounding mountains. The mountain ridges visually dominate the landscape, looming 1,000 to 2,900 feet over the central lowland. Topography in these mountainous parts includes steep-walled valleys with fast flowing streams and wooded slopes.

A plan for parks, trails, bike paths, and greenways for the Town, entitled "Where the Mountains Meet the River: Front Royal's Plan for Parks, Trails, Bike Paths, and Greenways", was developed in 1993. The goal of the trails and sidewalk path system in this plan is: "to provide accessible recreation for all, to provide unification of the Town's features such as schools, parks, commercial centers, historic districts and neighborhoods."

FORMER AVTEX SITE **M**



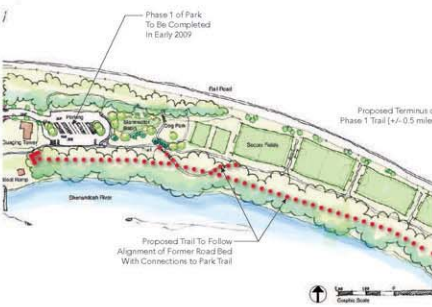
BOWMAN PARK **L**



FUTURE MIDDLE SCHOOL **K**



SOUTH LANDING BOAT LAUNCH **J**



PROPOSED PARK **I**



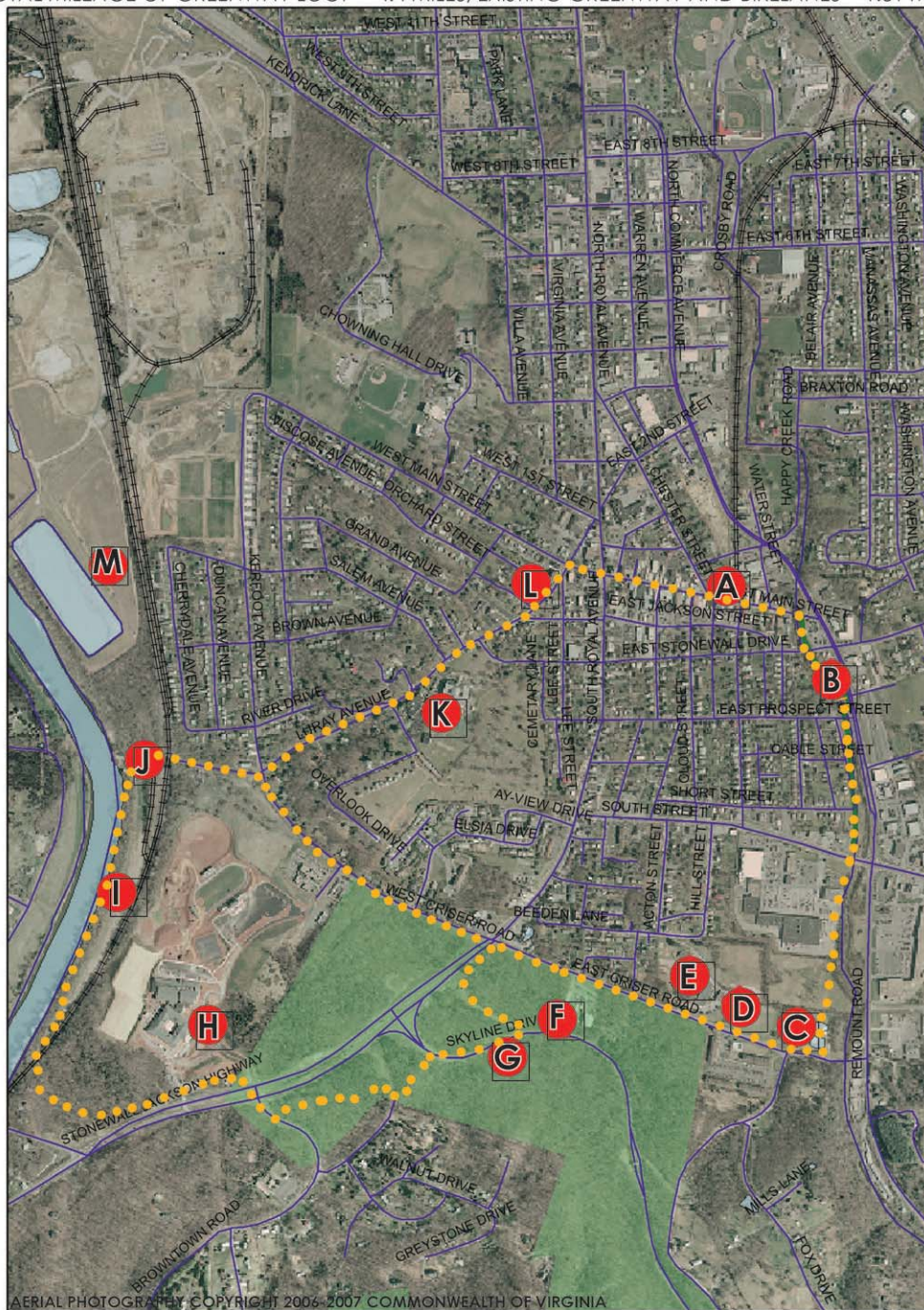
SKYLINE HIGH SCHOOL **H**



DICKEY RIDGE TRAIL HEAD **G**

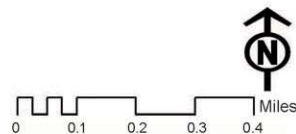
This drawing is conceptual and was prepared to show approximate location and arrangement of site features. It is subject to change and is not intended to replace the use of construction documents. The client should consult appropriate professionals before any construction or site work is undertaken. The Community Design Assistance Center is not responsible for the inappropriate use of this drawing.

TOTAL MILEAGE OF GREENWAY LOOP = 4.4 MILES; EXISTING GREENWAY AND BIKELANES = 1.51 MILES.



**Legend**

- ROADS
- RAILROAD
- EXISTING GREENWAY
- SHENANDOAH RIVER
- SHENANDOAH NATIONAL PARK
- POINTS OF INTEREST
- PROPOSED ROYAL SHENANDOAH GREENWAY



The Community Design Assistance Center (CDAC) was asked by the Front Royal Tree Stewards, in conjunction with the Town of Front Royal, to develop a conceptual master plan for a greenway, the Royal Shenandoah Greenway, that would utilize the constructed portion of Happy Creek Trail and create a loop connecting Burrell Brooks Jr. Community Park, the library, Ressie Jeffries Elementary School, Skyline High School, a proposed park along the South Fork of the Shenandoah, and the Conservancy Park.



**A** FRONT ROYAL VISITORS CENTER



**B** HAPPY CREEK ARBORETUM



**C** BURRELL BROOKS PARK



**D** SAMUELS PUBLIC LIBRARY



**E** RESSIE JEFFRIES ELEMENTARY



**F** SHENANDOAH NATIONAL PARK